



Sharing Our Faith

St. Luke's United Methodist Church

3080 Okatie Highway, between the back gates of Sun City on Hwy 170

“Praising and Serving God Thru the Ages”

Normal Worship times: 8:30 & 10:15 AM - (Holidays & 5th Sundays - 9:15 AM)

Volume 21, Issue 5

MAY 2026



May in the Life of the Church: Faith Begins at Home and Grows in the Heart

As the beauty of spring unfolds across South Carolina—from the blossoming azaleas of the Lowcountry to the warming breezes that sweep through Bluffton—May arrives in the life of the church as a season of growth, reflection, and renewal. Just as the earth begins to flourish, the church also pauses during this month to nurture the roots of faith in our homes, our hearts, and our communities.

Within the **United Methodist Church**, May is traditionally observed as **Christian Home Month**, a time set aside to remind us that faith is not only practiced within the walls of the sanctuary but also lived out around kitchen tables, in living rooms, and in the everyday moments of life. Scripture reminds us of this sacred responsibility. In **Deuteronomy 6:6–7**, God instructs His people: *“Keep these words that I am commanding you today in your heart. Recite them to your children and talk about them when you are at home and when you are away.”* Faith formation begins in the home, where love, forgiveness, prayer, and service are first learned.

At **St. Luke's United Methodist Church in Bluffton**, a church rich in history and deeply rooted in community, this message resonates strongly. Our church family continues to live out the calling to be a place **“WHERE FRIENDS AND FAMILY MEET”** and where generations grow together in faith. Whether through shared meals, fellowship gatherings, or simple acts of kindness within the community, the spirit of Christian Home Month reminds us that every home can become a small sanctuary where Christ is welcomed daily.

May also holds special historical significance for Methodists through the celebration of **Aldersgate Day on May 24**. On this day in **1738**, John Wesley experienced what he described as his heart being “strangely warmed” while listening to a reading of Martin Luther’s preface to the Book of Romans. In that moment, Wesley came to understand deeply that salvation comes through faith and the grace of God. As Paul reminds us in **Ephesians 2:8**, *“For by grace you have been saved through faith, and this is not your own doing; it is the gift of God.”* Aldersgate reminds us that faith is not merely something we learn intellectually—it is something we experience personally through God’s transforming grace.

Continued...



cont'd...

Throughout the **Lowcountry and across South Carolina**, May is also a time when churches prepare for important gatherings and ministries. Many congregations are finishing their spring outreach projects, youth ministries are concluding their school-year activities, and communities begin preparing for the upcoming **South Carolina Annual Conference of the United Methodist Church**, which will take place in June. These preparations remind us that the church is always moving forward in mission and service.

May also gives the church an opportunity to recognize **Asian American and Pacific Islander Heritage Month**, celebrating the diversity of God’s family and honoring the contributions of brothers and sisters whose faith and culture enrich the life of the church. Scripture reminds us in **Revelation 7:9** that God’s kingdom includes “*a great multitude...from every nation, tribe, people and language.*”

Most importantly, May encourages us to invest intentionally in our families and our community. Simple practices—family prayers, reading Scripture together, acts of service, and conversations about faith—can shape lives for generations. As Joshua declared long ago, so too we are reminded: “**As for me and my house, we will serve the Lord.**” (**Joshua 24:15**)

As we journey through the month of May, may our homes be filled with faith, our hearts warmed by God’s grace, and our community strengthened by love. And may St. Luke’s continue to be a beacon of hope in Bluffton—where faith begins at home and shines brightly throughout the Lowcountry.

Rev. Christopher L. Thompson, D. Min

DID YOU KNOW THERE ARE OTHER CHURCHES CALLED “BLUFFTON?”

Jim & Kathy Smith were traveling in Tennessee and came across this charming church.



Cosby, TN



If you happen to be travelling and come across a church called “Bluffton” please share your finding with us.

Volunteering Within the Church Is Crucial



We are all inspired by stories of personal sacrifice, but too often this boldness doesn't translate into volunteering in the local church.

All of us love and are inspired by the stories of historical individuals who step forward and proclaim, "This is my moment to serve." Scotland's [William Wallace](#): They may take our lives, but they'll never take our freedom." The Alamo's Lt. Col. [William Barret Travis](#): "I shall never surrender or retreat."

We are inspired by the bravery of those who step away from the crowd, sacrificing personal comfort (and sometimes life and safety) in order to make a difference in the lives of others.

It's curious, then, that this type of bold inspiration doesn't always translate into volunteering in the local church. A recent study reveals striking disparities between expectations and reality when it comes to churchgoers' views on volunteering. While 84% of respondents said their church encourages every adult to serve in some capacity, only 30% said they have personally served in the past year.

The study encompassed those who serve "inside the walls" on the weekend—volunteering in the church in areas such as guest services, family ministry, or worship—as well as "outside the walls" during the week—serving in places like homeless shelters, pregnancy support centers or tutoring "at-risk" kids.

As leaders, if we're honest, these stats are somewhat depressing. And we might try to lay the blame on any number of factors. The 2020 global pandemic threw many believers' church participation off-balance. Parents are struggling more than ever to divide their time between church, work, school, sports, and other extracurricular activities. And it seems humanity as a whole continues on our navel-gazing spiral: If it's not entirely convenient and comfortable for us, we just won't do it.

But as Christ-followers, we have to take a different view of serving our church and our city, because having a heart of service is at its core a discipleship issue. Here are four reasons every believer should pursue a service mindset.

1. The gospel commands it.

One of my favorite verses in Scripture is 1 Peter 4:10: "Just as each one has received a gift, use it to serve others, as good stewards of the varied grace of God." Peter loads a lot into these 22 words. Every believer has a spiritual gift. That gift is to be used for others. We are temporary stewards (managers) of that gift. And when we use our gifts, it's an outworking of God's grace.

2. Your discipleship demands it.

One of the identities of a disciple of Jesus is that of a servant. To serve is to look more like Jesus. The apostle Paul encourages us to "Adopt the same attitude as that of Christ Jesus, who, existing in the form of God, did not consider equality with God as something to be exploited. Instead, he emptied himself by assuming the form of a servant..." (Philippians 2:5-7, CSB)

We can't grow as a follower of Jesus until we follow Jesus in serving. You can't grow into spiritual maturity apart from using your gifts for service in Christ. Servanthood is a demonstration of obedience, an exercise in faith, and a revolution against selfishness. Serving, empties us of our "me-first" tendencies, seeking to outdo others in showing honor. (Romans 12:10)

Continued...

3. Your community needs it.

We only need watch the local news to discover that our community needs help. Regardless of whether the community in question is our “inside the walls” community of our congregation or the “outside the walls” community of our city, there are benefits that go far beyond ourselves when we serve. We see evidence of this kind of others-focused service throughout Scripture. God commanded the prophet Jeremiah to “pursue the well-being of the city I have deported you to. Pray to the Lord on its behalf, for when it thrives, you will thrive.” (Jeremiah 29:7, CSB)

When we use our gifts, we display the “varied grace” of God. I believe that means God has equipped specific believers with specific gifts. And when those believers don’t use those gifts, there is a specific facet of His grace our communities won’t see.

4. Your connection is better for it.

It has been discovered that volunteering is a key metric in whether someone feels fully connected to the church—not consistent worship attendance (though that’s important), not small group participation (though we want that.) No, it’s serving—more than any other factor—that determines whether someone feels like they are fully engaged with the life of the church.

That’s one of the reasons we encourage people newer to our congregation to join a ministry team. It’s a fast track to building relationships with other people, and often those relationships lead to a new (or deeper) relationship with Jesus. Through volunteering, in our church, we discover the joy of serving others when we use the spiritual gifts we’ve been given.

Will Ross,

INTERESTED IN VOLUNTEERING? Amy Erickson has been scheduling our outside groups for several years. She would like to know if anyone would be interested in keeping the calendar of events for the Fellowship Hall and working with outside groups to schedule meetings. She would be happy to answer any questions regarding what is involved. Please contact Amy if you are interested in volunteering for this activity.

Schedule of Outside Groups using our Fellowship Hall.

We are pleased that several community groups utilize our Fellowship Hall for their meetings. This is another way St. Luke’s serves as a hospital for the heart! ❤️

- Sundays, 1:30-3:30 – Trinity Christian Church
- Mondays, 5:30-7:00 p.m. – Just for Today Al Anon
- Mondays, 7:30-9:00 p.m. – Keep it Simple Men’s AA Group
- Tuesdays, 6-7 p.m. - Clear-Cut Directions AA Group
- 3rd Sat., 1:00 – 4:00 p.m.– Pamela Carter - card making
- Wednesdays, 7:00-8:00 p.m. – Drop the Rock AA Group
- Fridays, 10:00-11:00 a.m. – Living Free Women’s AA Group
- Every other Friday, 4:30-5:30 p.m. – Girl Scout Troop 4071
- Fridays 6:30-7:30 p.m. – Depth & Weight AA Group



God Could not Be Every Where, So He Created Mothers

God could not be everywhere, so he created mothers. Nobody on this Earth knows a child better than their mother. She is the most beautiful creation of God. It is said that if a child does not have a father, the mother can do anything for the survival of her children, but if a child does not have a mother, life never stays easy for the child. Only a mother gives selfless love to her child; she can sleep hungry but never let her child sleep hungry.

The celebration of Mother's Day, both in the United States and around the globe, proves the day's versatility and widespread appeal, rooted in diverse cultural traditions yet united in its core purpose. The inaugural official Mother's Day in the United States, celebrated in 1908, was not merely an isolated event but an important moment in the broader recognition and appreciation of mothers' roles in society. This first celebration, spurred by Anna Jarvis to honor her late mother and the broader concept of motherhood, quickly gained recognition, leading to President Woodrow Wilson's 1914 declaration that earmarked the second Sunday in May as a day of national observance for all mothers.

Ironically, as Mothers' Day grew in popularity, it also became highly commercialized, a development that deeply troubled Anna Jarvis. She had envisioned the day as an intimate occasion for expressing love and gratitude. She spent the latter part of her life opposing the commercialization of Mothers' Day even starting lawsuits against organizations that used the name "Mothers' Day" for profit.

My mother is my superhero. She is the one to teach that, however hard it may be, there will always be a beautiful morning waiting for you when you open your eyes.

She is the most powerful creature in this Universe. She can be a gentle wind, and at the same time, she can be a cyclone to a hurricane if someone tries to harm her child.

Now that I have said what mothers do, I will tell you a little bit about my mom. She was born before the depression and as she grew up, she knew the value of a dollar and hard work. While raising three children, her hands were always busy, from getting my brother and myself ready for school, fixing our breakfast, our lunches and seeing that we got on the bus. She always managed to keep the house clean, do the laundry, and all the chores that go along with the house. She always had supper ready when my dad came home from work. As I got older, I had chores to do such as wash the dishes, help cook, iron, mow the lawn, etc. My mom always finds time to work in her flower beds, sew, and quilt.

We always had a big garden so both my parents would get the ground prepared and planted. When it came time to gather vegetables she and my dad would get peas, butter beans, corn, (whatever was ready to gather) and we got the pleasure of shelling peas, butter beans, shucking corn, etc. She would then prepare the vegetables for the freezer. She would have us go with her and pick peaches and strawberries. I learned to use a potato peeler peeling peaches to make preserves or pickled peaches. We always had plenty of pickles, jellies, fresh vegetables to eat, and enough for the freezer.

Continued...

When the winter came it would be time to have a pig or cow processed for the freezer. She would then be busy making and smoking sausage, making our favorite Brunswick stew. Nothing from the pig or cow was thrown away, if she could not use it, she knew somebody that could. She would even use the fat for making her favorite lye soap.

We also had our chickens, so we had fresh eggs. In the spring, it was time to get baby chicks and after they got so big (most were roosters) they made either chicken and dumplings or fried chicken for the freezer.

My mom always had time to take us fishing, make cupcakes for my class in school, volunteer to work in the school clinic, and help with vacation Bible school. On Sunday morning we would get ready for church and off we would go. Church was where I gained knowledge about God and His love for humanity. I have very fond memories of church growing up.

Her baking was beyond words, making the best biscuits, cornbread, cakes, pies, and even homemade ice cream (which I still do today). Although she would work from sunup 'til' sundown she never complained, always found time to open the Bible and read God's word to us.

When we did wrong, we were disciplined when needed. You have heard "Spare the rod, Spoil the Child," that certainly was not the case in our family. She always had a 'switch' nearby for the cure of something we had done, and she did not mind using it. She never said, 'you wait 'til your daddy gets home.'

We were taught respect, manners, and that God should always be the center of our lives.

**"A love is something that no one can explain,
It is made of deep devotion and of sacrifice and pain,
It is endless and unselfish and enduring come what may,
For nothing can destroy it or take that love away."**

Helen Steiner Rice

Charlene King,
Lay Leader



Epworth has provided care and support for over a century to the children and families of South Carolina. Epworth staff members are knowledgeable and understanding, and they benefit from training that continually expands their knowledge and approach to care.

After more than 100 years of providing assistance to families, Epworth continues to expand its services to meet the needs of children in South Carolina.

Long recognized as an important and influential institution in the large field of children's welfare and well-being, Epworth has consistently been an innovator and practitioner of best practices for programs for the children who live on its campus, its own staff, and other South Carolina professionals who work with children.

Epworth's mission is to serve children, youth and families through caring, safe, Christian communities, where hurts are healed, hope is nurtured, and faith in God, self, and others is developed.

On Mother's Day, Sunday, May 10th, we will be taking an offering to support Epworth. This is a ministry of the South Carolina Annual Conference. The UMC designates two annual special offerings (Mother's Day and Work Day in September) to fund care for children, and many local congregations support the home through donations and volunteers. Please make donations payable to St. Luke's with "Epworth" on the memo.





OTHER EVENTS FOR ST. LUKE'S FAMILY

Graveyard Tour—Thurs. May 21st at 10:00 AM
Come & learn about the History of St. Luke's UMC.



Please wear **BLUE** on the 4th Sunday of the month.



MEETINGS IN THE FELLOWSHIP HALL

Every Monday—Men's Bible Study, 8:00 AM

Every Tuesday—Choir Practice, 7:00 PM

Every Thursday—Women's Bible Study,

Meet & Greet 5:30; Study 6:00-7:00 PM

Tuesday, 05/05—Trustees, 9:00 AM

Wednesday, 05/13—Missions, 1:00 PM

ALL are welcome to attend.

Monday, 5/18—Nominations Committee, 1:00 PM

Food, Fun & Fellowship will be on the **THIRD** Saturday this month - **May 16th,**





Spotlight on our Youth:

Have you wondered why we have switched to saying the Nicene Creed instead of our usual Apostles' Creed? All will be revealed on Mother's Day. Our new Youth Lay Servants Matthew and Aaron will be bringing something special to our church family that day!

Keep all our students in your prayers as they finish this school year. This is always a busy time of year as sports are happening and all the end of year activities are wrapping up school.



Student Activities:

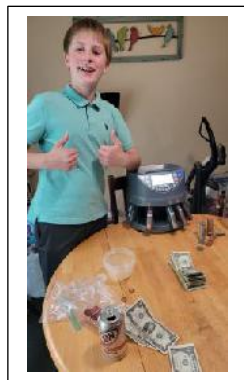
Matthew's soccer schedule for May:

May 2: 12 noon

May 3: 5 pm

May 9: Noon

All games are at Chaplin Park on Hilton Head. Remember to park in the lot closer to 278 and bring your own chair.



Aaron & Matthew
counting the
Change for Change!



Change for Change



This quarter, we are collecting funds for Agape to help purchase additional food items. **Last quarter, we collected \$334.47 for St. Jude's Children's Hospital.**

Please note that a separate basket will be passed specifically for our "Change for Change" offering. When our students are present, they will assist in passing the baskets.

Thank you for your continued generosity, encouragement, and support of our youth!

*Michelle Cramer,
Youth and Children's
Ministry*



The number of our neighbors who are struggling to make ends meet continues to grow. Bluffton Self Help’s food pantry served over 850 families last year, and they are seeing a 10% increase so far this year. Family Promise has opened an office in northern Beaufort County, will open another in Ridgeland soon, and has plans to expand into Colleton and Hampton Counties to address the staggering number of families who are either homeless or on the verge of losing their homes.

All the organizations we support through our Missions outreach are extremely appreciative of St. Luke’s consistent and generous support! St. Luke’s Missions Committee is thankful for your helping us to support these organizations.

Our next missions meeting will be on **Wednesday, May 13, at 1:00 PM** in the Fellowship Hall. Please join us and learn more about St. Luke’s missions’ outreach and how you can become involved.

Thank you for being a blessing to our community!

Linda Fisher & Elizabeth Vance
St. Luke’s Missions & Outreach Co-Chairs

Bluffton Self Help First Sunday Food Drive, May 3rd,

Let’s Help Stock the Market for Summer!

Over 850 families will be relying on Bluffton Self Help to help put food on their tables this summer. With children not receiving lunch and snacks at school during the summer, along with higher utility bills and childcare costs, the need will be greater than ever.

Lois Willig will be in the parking lot before each worship service on May 3rd to collect our donations. If you have items to donate after this date, please place them in the basket in the Fellowship Hall marked “Bluffton Self Help.” Here is a list of the most needed items:



Non-Perishables

- | | |
|--------------------------------------|---------------------------------|
| Canned Tuna | Canned Chicken |
| Canned Fruit | Unsweetened Applesauce |
| Canned Chilli & Beef Stew | SpaghettiOs’s |
| Hearty Soups | Pasta & Pasta Sauce |
| Skillet Meal Kits (Hamburger Helper) | Taco Kits, Salsa, Refried Beans |
| Pancake Mix & Maple Syrup | Shelf Stable Cheese (Velveeta) |
| Shelf Stable Almond Milk | Cooking Oil |
| Ketchup, Mustard, Mayonnaise | Flour, Sugar |
| Shelf Stable Salad Dressing | Jelly |
| Shampoo & Conditioner | Body Wash |

Unfortunately, they cannot accept open, expired, or damaged packages.



cont'd...



Family Promise has changed their name to better reflect the area they are now serving. Besides Beaufort and Jasper Counties, they are expanding into Colleton and Hampton Counties. The shelter for homeless children and their families, Freedom House, has been remodeled and can now accommodate up to seven families.

On **Sunday, May 10**, we will begin sign-ups for meals for the families at the Freedom House on Thursday, June 4, and Friday, June 5. Please check the bulletin board in the sanctuary for a list of the items that will be needed. If you can help, we will be in the Fellowship Hall on Thursday, June 4, from 9:00-9:30 a.m. to accept your donations. You can also leave nonperishable items in the "Family Promise" basket, or perishable items with a date beyond June 5 in the refrigerator marked for Family Promise. If you have any questions or need to make other arrangements, please contact Linda Fisher at dlfisher4@hotmail.com.



Agape Family Life Center Food Pantry, 5855 Okatie Hwy, Hardeeville

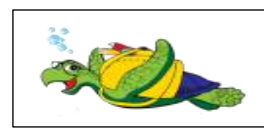
Every **Saturday and Wednesday from 10:00-noon**, volunteers are needed to hand out fresh food that arrives from local stores through Second Helpings. Local families and seniors in need rely on the food they receive from Agape's food pantry. No heavy lifting is required and no advance sign up is needed. If you have any questions, please contact Leslie Richards at lesliarichards717@gmail.com.



If you are going through an illness or another crisis and could use some support, please let us know. Marie Baldauf leads this ministry, which can help by providing meals and caring phone calls. Please contact Marie at baldaufmarie@gmail.com if you need support or would like to help in this ministry.



PRITCHARDVILLE ELEMENTARY SCHOOL



Pritchardville's ML Family Game Night

Thanking you for all the wonderful "prizes" you donated to encourage families to learn to speak English together.





Ronald McDonald
House Charities®
of the Coastal Empire

Keeping families close®



April 16, 2026

Lois Willig
Mission's Communication
St. Luke's United Methodist Church
PO Box 2779
Bluffton, SC 29910

Dear Lois,

On behalf of the kids and families served by Ronald McDonald House Coastal Empire, **thank you for your generous In-Kind donation of pop tabs.**

Because of you, families facing the unthinkable don't have to face it alone. When a child is in crisis, everything else stops. Work, sleep, normal life, it all fades behind one simple need: stay close. That's what we do. We keep families close to the care their child needs and close to each other when it matters most.

For many of our families, this is the most important House they will ever stay in. Here, parents don't have to choose between being strong for their child and figuring out where to sleep, eat, shower, or breathe. They can just be Mom. Just be Dad. Just be there.

Since July 11, 1987, Ronald McDonald House Coastal Empire has served families from newborn to young adults regardless of diagnosis, background, or ability to pay. Located just 176 steps from the Dwaine & Cynthia Willett Children's Hospital of Savannah, and serving families from Memorial, St. Joseph's/Candler, and medical facilities across the Coastal Empire, our doors are open 24/7/365.

Your gift supports all programs:

- The Savannah Ronald McDonald House
- (2) Ronald McDonald Family Rooms at local hospitals
- (2) Ronald McDonald Hospitality Cart- our "Cart with Heart," delivering comfort directly to hospital rooms

From warm beds and hot meals to quiet spaces, clean laundry, snacks, smiles, and simple kindness, every single piece of that is powered by people like you. And here's the truth: the need is growing. More families than ever are coming through our doors, and we are actively working to serve more families better, through expansion, innovation, and deeper community partnerships. Your generosity isn't just helping today's families. It's helping build what comes next.

Because of you, parents can sleep near their child.
Because of you, siblings can feel safe.
Because of you, families can focus on what matters most: healing.

Thank you for standing with our families. Thank you for believing in this mission. And thank you for being part of something that truly changes lives.

With gratitude,

Billy Soroachak
CEO
Ronald McDonald House Coastal Empire

Ronald McDonald House Charities® (RMHC®) of the Coastal Empire is a 501(c)3 registered, nonprofit organization that operates solely on donations. Your contribution is tax deductible to the fullest extent of the law. Our tax ID# is 58-1630107. Please consult your tax advisor for additional information. Please visit our website to learn about what's new at RMHC: www.rmhc.coastalempire.org. Follow RMHCCE on twitter.com/RMHCSavannah www.facebook.com/rmhccoastalempire www.instagram.com/rmhc_coastalempire/ #KeepingFamiliesClose



HISTORY HAPPENINGS

"A BLAST FROM THE PAST"

St. Luke's was nominated for the National Register of Historic Places in 1987 by church and community members. The manager of the National Register office in Columbia at that time was Andrew Chandler. According to Mr. Chandler, churches are not normally considered for listings in the Register but because of the type of architectural design, the period of time, and the integrity of the building, St. Luke's was considered.



The architecture of St. Luke's is described as "transitional, Georgian Greek Revival." The fact that it is one of the oldest frame churches in South Carolina gives it historical importance. It is only one of a few pre-1861 buildings still in use in this area. Gullah culture and Civil War history were additional arguments used to make the case for St. Luke's inclusion on the Register.

The National Register standards for evaluation were established to recognize the accomplishments of all peoples who have made a significant contribution to our country's history and heritage.

"A WALK DOWN MEMORY LANE"



These photos were taken at one of our events years ago. Can you recognize these members of St. Luke's?

*Kathy Smith,
Church Historian*

History Committee Happenings: Graveyard Tour...

We held our first public tour of St. Luke's church and cemetery on April 16. We had 18 community members and 10 members of St. Luke's attend. Mary Cale conducted the church tour, and Kathy Smith took the guests through the graveyard. Lois Willig registered people and organized the groups. She also brought water to the very warm participants. Alan and Carol Bethel sold memorabilia. The next tour will be held on May 21st. We appreciate all the PR that Will and Pat Ross provided. Also, thanks to Cynthia Thompson and Constance Ulrich for designing some great posters.

If you have not been on the tours, please add May 21st to your calendar. We also appreciate the PR that you have done by sharing the information with your friends and neighbors.

Please join us at St. Luke's at 10:00 AM for guided tours of the church and the graveyard the third Thursday of any month. We'll be glad to see you!



A **LOO**K BACK AT APRIL 2026



April started off with a Maundy Thursday service in the Fellowship Hall. And then, came Easter!



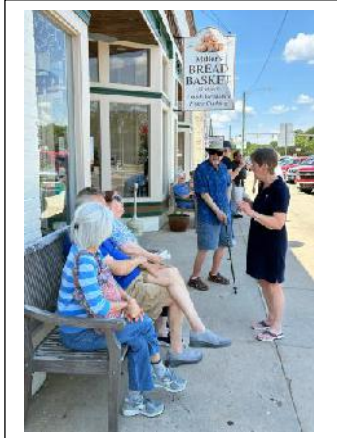
Choir Rehearsing

And then, some went to God's Acres with a side trip to Sheldon ruins.





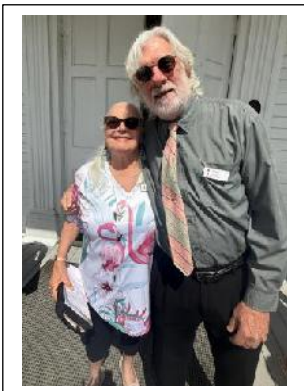
Enjoyed a meal at Miller's Bread Basket – Amish-Mennonite Homecooking.



Then, on to Old Sheldon's Church Ruins.



AND THEN, THERE WAS PINK...



We always enjoy our 4th Sunday service with the Canterfield residents! This ministry is led by our Lay Servant Ministry: Will Ross, Kathy Smith, Charlene King, Michelle Cramer, and Cynthia Thompson.

Thank you to all of our St. Luke's church members who come out each month to help, serve, and share God's love. A special thank you to Fran Iacova, who started this ministry and continues to help us keep it going strong!

And we can't forget about our amazing Pastor Chris, who faithfully comes to share Holy Communion with the residents—such a beautiful and meaningful part of our time together. 🙏❤️



Blanket Ministry...These blankets go to those you are ill or shut-in. If you know of someone who is in need of a blanket, please let us know.



We have a Men's Bible Study that meets each Monday morning at 8:00 a.m. All men are invited to join in. Please come!



Did you notice the brick column at the entrance that was knocked down?



It has been repaired!



Prayer Requests

MEMBERS & CONGREGANTS

Amy Dauplaise Thomas Cook Nancy & John Sariscak Ouida Dell Dave Jacoby
Fran Iacovo Don King

FAMILY AND FRIENDS OF CONGREGANTS

Linda Lorick, sister of Ouida Dell
Jack Dobson, son of Tina Topoleski's neighbor
Paula, friend of Nettie Peck
The Abercrombie family, friends of Charlene King
Steve Nelson, friend of Marie Baldauf
Carol Hubbard, relative of John Hubbard
Fred and Lisa, brother and sister-in-law of Elizabeth Vance
Tom Finken, friend of Ouida Dell
Grandson of Louise Propst
Diane Gilliam, friend of Charlene King
Karen, friend of Tina Blount
Denise, niece of Judi Landin
Ann and her husband, neighbors of the Cservek's
David and Lynn Clearwater, friends of Beverly and Thomas Cook



Our deepest sympathy and prayers to the son-in-law of Dawn Hall, and the Bower family, on his father's recent passing.

Let us remember with cards, and prayers...
CHURCH MEMBERS IN NURSING HOMES,
ASSISTED LIVING OR HOMEBOUND

Ruth Dolan,
Summer Breeze, 351 Wilmington
Island Rd. Memory Care, Room 107A
Savannah GA 31410
Elnora Ekholm, 173 May River Rd. Bluffton SC 29910
Jerry Wick, 740 Middletrail Court Mt. Airy MD 21771



Happy Birthday!

Happy Anniversary

MAY BIRTHDAYS

JUNE BIRTHDAYS

MAY ANNIVERSARIES

JUNE ANNIVERSARIES

03 Beth King
 10 Beth Woods
 11 Jean Shaffer
 12 Marsha Gerber
 16 Althea Serrant
 20 Gary Cranston
 22 Harold Prosser
 23 David Sytsma
 24 Bob Sandruck
 24 Lois Willig
 27 Nancy Sariscak
 29 Jerry Vagnier
 30 Paula Swope

02 Dave Jacoby
 03 Leslie Van
 04 Dave Baumeister, Jr.
 04 Sherri Prosser
 13 Andy Makarick
 13 Shirley Stark
 18 Barbara Marangio
 22 Ruth Dolan (Memory Care)
 23 Marie Baldauf
 23 Rev. Chris Thompson
 24 Constance Ulrich
 25 Scott Wheeler
 28 Carla Carte
 30 Donna Hauck

06 Margo & Joe Cservek
 07 Carol & Sam Rossa
 17 Susie & Michael Brown
 19 Linda & Bill Metcalf
 20 Pat & Allyn Perdue
 23 Charlene & Don King
 25 Beth & Eric Woods
 29 Donna & Chris Hauck

02 Dell & J.W. Harper
 04 Linda & George Batten
 13 Marnie & Rick Beebe
 14 Sharon & Andy Makarick
 15 Barb & Bud Silcox
 18 Ellen & Rich Rohde
 24 Leslie & Greg Richards
 30 Paula Swope & Jack Reed



OR WATCH "ON-LINE" AT

ST. LUKE'S YOUTUBE CHANNEL

<https://www.youtube.com/@st.lukesunitedmethodistchu8920/videos>

Donate through Vanco, go to our web page:

<https://stlukesumc-okatie.org/>, Click on the "Donate" button at the top of the page. This will link you to our Vanco donation tiles. Choose where your donation will be applied.



Please "like" our Facebook page:

<https://www.facebook.com/profile.php?id=100082060615677&mibextid=LQJ4d>

LET ME TAKE YOUR PHOTO! If you are attending St. Luke's United Methodist Church, we would like to have you in our Photo Directory. We include visitors as well as members! Please see Pat Simmons to arrange a time to have your photo taken. It only takes a minute of your time!



IF YOU WOULD LIKE TO BECOME A MEMBER OF ST. LUKE'S – you may pick up an "Invitation to Membership" form (located behind the last pew) also on the bulletin board and in the Fellowship Hall. Or email patsimmonsperdue@gmail.com for a copy. Fill it out, bring it back and Pastor Chris will get in touch with you.

If you cannot come to church, we Thank You for "mailing" your donations to:

**St. Luke's UMC
 PO Box 2779
 Bluffton SC 29910**



Warning

When I am an old woman I shall wear purple
With a red hat which doesn't go, and doesn't suit me
And I shall spend my pension on brandy and summer gloves
And satin sandals, and say we've no money for butter.

I shall sit down on the pavement when I'm tired
And gobble up samples in shops and press alarm bells
And run my stick along the public railings
And make up for the sobriety of my youth.

I shall go out in my slippers in the rain
And pick the flowers in other people's gardens
And learn to spit.

You can wear terrible shirts and grow more fat
And eat three pounds of sausages at a go
Or only bread and pickle for a week
And hoard pens and pencils and beer mats and things in boxes.

But now we must have clothes that keep us dry
And pay our rent and not swear in the street
And set a good example for the children
We must have friends to dinner and read the papers

But maybe I ought to practice a little now?
So people who know me are not too shocked and surprised
When suddenly I am old, and start to wear purple.