



Sharing Our Faith

St. Luke's United Methodist Church

3080 Okatie Highway, between the back gates of Sun City on Hwy 170

"Praising and Serving God Thru the Ages"

Worship times: 8:30 & 10:15 AM (5th Sundays 9:15 AM)

Volume 20, Issue 12



DECEMBER 2025

A Season That Still Speaks: Advent Hope at St. Luke's United Methodist Church

As the Advent wreath is lit once again inside our historic sanctuary of **St. Luke's United Methodist Church in Bluffton, South Carolina**, the soft glow of each candle carries a message that feels both timeless and urgent. Nestled beneath the moss-draped oaks of the Lowcountry, our St. Luke's—proudly listed on the **National Historic Register**—enters this Advent and Christmas season with a renewed commitment to embody the gifts of **Hope, Joy, Peace, and Love** for our members and the wider community.

With **134 members on roll**, we are a congregation rich in wisdom, heritage, and faith. Many of you are seasoned members of society—stewards of a church story that stretches back generations. You have weathered wars, social changes, storms both literal and personal, and have continued to gather faithfully within these same wooden walls that have held prayers for more than two centuries.

This year, as the world continues to navigate economic strain, cultural tension, and rapid societal shifts, the Advent message rings especially true for our resilient congregation. St. Luke's stands as a living reminder that faith communities do not simply persevere—they shine.

"Advent doesn't ignore the struggles of the world," one longtime church member shared. "It teaches us to see God's light in the middle of them."

That light begins with **Hope**, a defining gift of the season. For St. Luke's, hope is expressed through our commitment to supporting neighbors, uplifting the elderly, and offering a spiritual home where anyone can find reassurance. The Advent hope felt here is not abstract; it is lived out through warm greetings, shared meals, and the unwavering belief that God is still at work in Bluffton and beyond.

From this hope flows **Joy**—a joy that has long characterized the congregation. It is found in the familiar hymns echoing through our historic sanctuary, in the laughter exchanged before worship, and in the treasured traditions passed lovingly from one generation to the next. Joy, at St. Luke's, is not dependent on circumstance; it grows from gratitude and community.

The church also leans deeply into **Peace**, a gift urgently needed today. Through prayer gatherings, acts of reconciliation, and intentional listening, our congregation models a peace that calms anxious hearts and strengthens relationships—not only within the church but throughout Bluffton.

Continued on next page...

Continued...

And anchoring the season is **Love**—the kind of steadfast, grace-filled love that has sustained St. Luke's for decades. It is a love expressed through service, compassion, and a shared desire to be Christ's presence in the world.

As Christmas draws near and a New Year dawns, I extend a heartfelt message to all:

May Hope guide us.

May Joy uplift us.

May Peace steady us.

May Love surround us.

And may the coming year carry forward the light this historic congregation continues to faithfully shine.

Continued Peace and Blessings in this season.

Rev. Christopher L. Thompson, D. Min



A Good Confession



I grew up in the Catholic faith. In fact, I went to catholic school for 12 years. In grade school we attended mass every morning, before the start of school. Also in grade school, we went to “Confession” every 3 weeks. For you who don’t know, Confession is when you entered a booth with a screened wall you shared with a priest. The screen was a very tight mesh and darkened. You couldn’t see the priest, only a shadow or outline.

Every three weeks, we entered the booth and confessed our sins. It went something like this: “Bless me father for I have sinned. It has been three weeks since my last confession. I was angry with my parents and shouted at them. I took the name of the Lord in vain twice and I had impure thoughts three times.” The priest was supposed to council us and give us a penance. Usually the result was: “Try to be better and say three Our Fathers and Three Hail Mary’s. Now go and make a good Act of Contrition.”

When you are 7, 8 or 9 years old it’s about the same every time. How bad can you be? After a while, I started to disguise my voice, so the priest wouldn’t realize that I had the same simple sins without any improvement. Once I sounded like a punk from New Jersey. The next time I had an Italian accent. Following that I made my voice sound like I was from the south. One time following my confession, the priest said “Will...next time try to do a French accent, I think I’d like that.” I almost peed my pants.

I went on to become an altar boy, which is an assistant servant to the priest during a Mass. This priest who heard our confessions, also taught us how to be an altar boy. We became good friends, as he was a very nice person and friendly teacher. When we were just learning how to assist as an altar boy, we would make some mistakes. He would give us hints or jesters to get us back on track. As I got older, and discovered girls, the amount of sins grew in severity and volume. I became uncomfortable “Confessing” to this priest that I admired, so I sought other priests that I could confess to, because I didn’t want this friend, that I admired, to know.

Now I am older and practice my Christian faith as a Methodist. We don’t confess to another human. We go straight to God. You can’t hide anything from God. He knows everything you have done, good or bad. You don’t even use your voice, or voices. It all comes straight from the heart. But if you listen closely, with your heart, you can hear God’s response to your confession. He doesn’t want three Our Fathers and Hail Mary’s. He reminds us of His expectations and invites us to live the life taught to us by His Son Jesus. He tells us that He still loves us and that He is here to help us. Yes, the journey can be difficult at times, but He assures us that we can do it together. (PS, I eventually improved!)

Will Ross,
Acting Lay Leader

WORSHIP

Hello Church Family. – Sunday November 30th is the first Sunday of Advent. We'll have our Advent Wreath displayed. Each Sunday and on Christmas Eve we have parishioners read short Bible passages and light a candle on the Advent Wreath. You will notice that our traditional Chrismon decorated tree is on display. Since this is the 5th Sunday of the month, we will have one service at 9:15 a.m. This will be followed by a brunch at Ma Daisy's Porch in Old Town Bluffton.



Sunday December 21st will be one service at 9:15 a.m. Marsha Gerber our Music Director and the Choir will present a Christmas Cantata. You won't want to miss this. It will be beautiful.



On Wednesday December 24th we'll Celebrate Christmas by having our traditional Candlelight Service at 6:00 p.m. We will hear scripture, sing Christmas Carols and end with the lighting of the candles and singing Silent Night.

We will have 2 services on Sunday December 28th – 8:30 & 10:15 a.m.

Thanks to all of you who have so graciously volunteered to be Greeters/Ushers and Gospel Readers, Counters, Candle lighters and Communion Stewards and any other job that I have asked you to do during the year. I cannot do this job alone and I appreciate all of you more than you know.

If anyone has comments, questions or suggestions please feel free to call or email me.

Nancy Sariscak
Worship Committee Chair
412-770-8092
nlsack72@gmail.com



For some of you who are new and do not know about the Chrismon Tree or some of our older members and attendees who may want or need a refresher, I have provided a bit of history about the tree and the beautiful ornaments that were made by some of our members. Take a walk up before or after the service to take a closer look. Also make sure to look at the beautiful tree skirt that was also made by a member of St. Luke's.

The Chrismon

We all love to admire beautiful trees at Christmas, and many of us have lovely traditions in our families related to a Christmas tree. This is a tree that consists of white pearl and gold ornaments all made as Christian symbols. Thousands of churches all over the world have done this special gift of love and wherever they are placed, they speak of our Lord and God: they are a "song" to the glory of God. Some are very simple, some rather elaborate, but all can be fun to create and enhance our Advent/Christmas celebrations for many years to come.

Some Chrismons are simple copies of Christianity from its earliest days; others are new explanations of God's never-changing presence in our ever-changing world, and some are combinations of several elements, the old and the new.

What is the definition of a Chrismon?

A Chrismon is one of a number of Christian symbols intended to represent aspects of the Person, life or ministry of Jesus Christ and the life, ministry or history of the Christian Church through a single image, emblem or monogram. The term "Chrismon" comes from the Latin phrase "Christi Monogramma", meaning "monogram of Christ." By definition, the literal monogram of Christ is the more commonly named labarum or "Chi Rho," which is the Greek letters X ("chi") superimposed upon P ("rho.") Often, the P is formed to look like a shepherd's crook and the X like a cross, symbolizing Jesus Christ as Good Shepherd of his flock, the Christian Church.



Chrismons can be found in all sizes, any sort of construction, and are used in numerous applications. Perhaps most commonly, Chrismons are used to adorn liturgical devices and Christmas Trees during Advent and Christmas, where they are made from various materials ranging from needlepoint to woodwork and metalwork. They can also be found as decorations in and outside of Christian church buildings and homes and even found on gravestones and personal stationary.

Many of these symbols have histories dating back to the earliest times of the Church. ("Monogram of Christ." New Advent.)

The first Chrismons were used centuries ago by early Christians as secret messages to each other to protect Christian meeting places etc. The name, Chrismon, has been copyrighted by Ascension Lutheran Church.

Chrismons – cont'd on next page...



Here are some facts about Chrismons. Their purpose is to point to the Goods News. If you call an ornament a Chrismon, it must be white and/or gold. White is the sign of purity and perfection; gold stands for majesty and glory. Red may be used sparingly. Some examples are to denote Jesus' blood, martyrdom, and Pentecost (Holy Ghost.) I, personally, have never seen red Chrismons. Chrismons may not be used for a profit-making venture. There should be a guide with explanations of the symbols for viewers each time they are displayed.

Chrismons are for every church season and occasion of the year and for everyday use in homes. The Advent season is the major use of them at this time. It is better to under decorate the Christmas tree to show green around every ornament. Pearls and gold beads are the most used media, but sequins, stones, and glass beads are also used.

A green tree stands for life, growth, and hope. When the tree is decorated with clear lights, it is a reminder that Jesus is the light of the world.

Nancy Sariscak, Worship Chair

Spotlight on our Youth:



Congratulations to Aaron on qualifying for The South Carolina Junior Scholars program! He scored over 550 in the reading and writing portion of the PSAT and over 530 in the mathematics portion of the PSAT. Way to go Aaron!

Change for Change

This quarter, we'll be collecting change and items to benefit the Palmetto Animal League.

There's a container on the table as you enter the sanctuary where you may place your change.



Student Activities:

Aaron – Low Country Holiday Spectacular: Back in Time for the Holidays

- **Performance Dates:** December 6th (2:00 p.m. and 6:30 p.m.) and December 7th (2:00 p.m.)
- **Location:** HHHS Seahawk Cultural Center
- **Tickets:** \$25, available at: buy.tututix.com/blufftonschoolofdance



Thank you for your continued generosity and encouragement of our youth.

Warm regards,
Michelle Cramer
Youth and Children's Ministry



MEETINGS IN THE FELLOWSHIP HALL

Every Monday—Men's Bible Study, 8:00 AM

Tuesday, 12/2—Trustees, 9:00 AM

Wednesday, 12/10—Missions, 1:00 PM

Thursday, 12/4—Women's Bible Study, Meet & Greet, 5:30; Study 6:00-7:00 PM

Saturday, 12/27 –Coffee Hour Ministry, 12:30 PM

Coffee Hour Ministry Meeting

The Coffee Hour Ministry will hold a meeting on **Saturday, December 27th at 12:30 p.m.** in the **Fellowship Hall.**

This meeting is to prepare for our New Year.

Anyone interested in being part of this ministry is warmly invited to join us!



OTHER EVENTS FOR ST. LUKE'S FAMILY



Sunday, 12/21 – Cantata, 9:15 AM – ONE Service

"CAROLS" BY Heather Sorenson
The Chancel Choir



Sunday, 12/28 – TWO Worship services, 8:30 & 9:15 AM – Remember to wear **RED**, the **"Color of the Month"** and bring a friend/neighbor

Sunday, 12/28 – Songs & Communion with Canterfield Assisted Living Residents, 1:00 PM



Hi...

We wanted to make sure you knew about the **Bluffton United Methodist Church 3rd Annual Live Nativity**, **Tuesday, December 16th with 2 showings at 6:00 p.m. and 8:00 p.m.** Please share with your congregation. We want everyone to come and experience the wonder of Christmas with us! We will have animals – and you can pet them! Bring your own chair! It is a free event, donations appreciated.

Please let me know if you have any questions – we look forward to sharing the Christmas Story with our community.

Blessings, Sally

Sally C. LeSage

Director of Christian Education
Bluffton United Methodist Church





Canterfield Christmas Wish List



St. Luke's Lay Servant Ministry invites our church family to join us as we prepare Christmas gift bags for the residents of Canterfield.

If you would like to donate, please drop off items in the collection box located in the Fellowship Hall **no later than 12:00 p.m. on December 27th**.

Items Needed:

- Travel-size toothpaste
- Travel-size mouthwash
- Toothbrush
- Travel-size lotion
- Travel-size hand sanitizer
- Crossword puzzle books
- Adult coloring book with coloring pencils
- Socks with grip bottoms
- Candy canes

Thank you for helping us share joy and love this Christmas season!

— St. Luke's Lay Servant Ministry

If you are interested in becoming a Lay Servant, please contact Cynthia Thompson.



UMC Walterboro District Lay Servant School

Registration for each class is \$25 and does not include the cost for the textbook required for that class.



Courses Include

Lay Speaker Basic Course
Leading Prayer
Our Methodist Heritage
Discipleship Begins with Relationship

MISSIONS MATTERS



December is one of the busiest and most exciting times of the year as we approach the celebration of Christ's birth. Most of us will be attending parties, shopping, gift-giving, and spending time with family. It is heartwarming to see that at St. Luke's we include our neighbors in need on our "to-do" lists this month by donating food, volunteering our time, and helping to ensure that every child has gifts for Christmas.

St. Luke's Missions Committee is always looking for ways that our church can help meet the needs of the less fortunate in our community, especially the children. Our next Missions meeting will be on Wednesday, December 10th, at 1:00 PM in the Fellowship Hall. We are currently planning our outreach for 2026 and would love to have you join us.

We pray that you experience the joy and blessings that come from helping others now and in the coming year!

Merry Christmas!

Elizabeth Vance & Linda Fisher

St. Luke's Missions & Outreach Co-Chairs

Bluffton Self Help First Sunday Food Drive, Dec. 7th

December can be an especially worrisome time for families in need. Christmas gifts for their children, food for a holiday meal, extra food needed for the children who will be home during the winter break, all of these add to the stress many families are going through. We can help lessen the worry by helping to stock the food pantry to meet the increased demands.

Jane Tiffany will be in the parking lot before each worship service to collect your donations. All donations are appreciated. However, here are lists of the items needed for a holiday meal as well as the most-needed pantry staples.

Unfortunately, they cannot accept open, expired, or damaged packages.



Christmas Dinner Needs

Canned Peas & Corn	Canned Pumpkin
Cranberry Sauce	Shelf Stable Dressing
Dried Potatoes	Canned Sweet Potatoes
Cream Soups	Broths & Gravies
Stuffing Mix	Bread, Cookie & Brownie Mixes
Cake Mix & Frosting	Pie Crust & Pie Filling
Large Disposable Roasting Pans	

Cont'd...



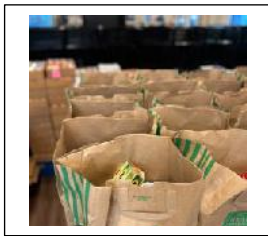
cont'd...

Most Needed Staples

Canned Tuna & Chicken	Chilli, Beef Stew, Hearty Soups
Canned Tomatoes	Pasta & Pasta Sauce
Taco Kits, Salsa, Black Beans	Skillet Meal Kits (Hamburger Helper)
White Rice	Cooking Oil, Flour, Sugar
Mayonnaise & Ketchup	Velveeta & Parmesan Cheese



Bluffton Self Help is so appreciative of your donations including paper bags for their Holiday meals!



October Follow-Up: St. Luke's donated the food and hosted a wonderful cookout at the Family Promise shelter on October 31st. Pastor Chris did a masterful job grilling hot dogs and hamburgers for everyone. The children at the shelter enjoyed crafts, and the "make-your-own" sundaes were a real treat for everyone! Thank you to Mary Cale and our Pastor for making this event a huge success.



November Follow-Up: On Thanksgiving Day, St. Luke's provided a hot turkey and ham dinner, with all the trimmings, for the families at the shelter. Thank you to Mary Cale and Lois Willig who shopped for the food, and to Lois who helped Linda Fisher prepare and deliver the meal.



cont'd...

Coming Up in December – This month we will provide meals on Tuesday, December 16th, and Thursday, December 18th. Please sign up on the sanctuary bulletin board beginning **Sunday, December 7th**, if you can help with any of the items needed for these meals. Currently, the shelter has six parents and eleven children, the youngest is only a month old!

Please bring all donated food to the church between 9:00 and 9:30 on Tuesday, December 16th. Before this date, if you are donating nonperishable food, it can be placed in the basket labeled “Family Promise” in the Fellowship Hall. Fresh food, with a “use by date” after December 18th, can be placed in the refrigerator in the Fellowship Hall clearly marked for Family Promise. If you need to make other arrangements, or have any questions, please contact Linda Fisher at 770.355.9158.



PRITCHARDVILLE ELEMENTARY SCHOOL

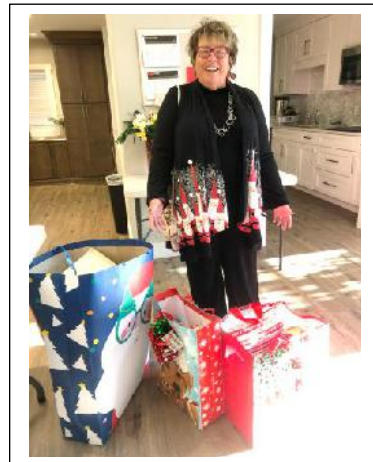


Adopt-A-Student for Christmas

“Adopt a child from Pritchardville Elementary“ Holiday Mission is under full swing thanks to your generosity. Your large, labeled gift bags with individually wrapped gifts are due on or before Sunday, Dec. 7th.

Either bring them to the Fellowship Hall on Sunday Dec. 7th or contact Lois Willig 843.304.1086 to make arrangements to get them to 29 Mongin Way.

Thank you again



AGAPE FAMILY LIFE CENTER FOOD PANTRY

5855 S. Okatie Hwy, Hardeeville

Volunteers are needed every Wednesday and Saturday from 10:00 – 12:00 to help distribute fresh food to families and seniors in need. You do not need to sign up in advance. Just show up, sign in, and they will give you an assignment. You will not be asked to do any heaving lifting. This is a wonderful way to meet the clients they are serving, as well as other volunteers. If you can, please wear your church nametag. Please contact Leslie Richards at lesliearichards717@gmail.com for more information.



Samaritan's Purse Operation Christmas Child – “It's All About Jesus”

We're happy to report that St. Luke's achieved our goal of packing over 100 Samaritan Purse Operation Christmas Child shoeboxes this season!!

Last year our congregation packed 96 child shoeboxes and this year... drum roll... we packed 147 shoeboxes, which includes 32 shoeboxes packed online. We cannot express our amazement and gratitude for the response of our congregation in packing so many shoeboxes! These boxes will provide happiness and fond memories to many needy children.

Thank you to all who participated and enjoyed this mission of sharing God's love with these needy children.

Leslie Richards and Jane Tiffany

St. Luke's Operation Christmas Child Coordinators



Pastor Chris blessed the shoeboxes before they left the parking lot!



The grandchildren of Joyce & Bill Haskins decorated their boxes. They are beautiful!



Many thanks to Leslie Richards and Jane Tiffany for taking on this very special project. Job well done!!



HISTORY HAPPENINGS

My favorite Christmas book of all time is *The Littlest Angel*. I read it periodically throughout the year because it reminds me of how I sometimes feel inside –clumsy, awkward, unworthy, (you supply your own answers here.)

The story is about a very young angel who hasn't been in Heaven long. He is the youngest and smallest angel there and he struggles to behave like a "proper angel." But he can't seem to get it right. He sings off-key, drops things, can't keep his halo on straight (let alone polished,) and often gets distracted. The other angels try to be patient, but the Littlest Angel feels homesick and embarrassed.

The Littlest Angel takes place in heaven on the day all the angels scurry to choose the most extravagant and extraordinary gifts to celebrate the birth of God's son—bright stars, golden harps, shimmering fabrics. The littlest angel is worried. All he has is a box he brought from Earth and the items he treasured inside...

A butterfly with golden wings, captured one bright summer day on the hills above Jerusalem, and a sky-blue egg from a bird's nest in the olive tree that stood to shade his mother's kitchen door. Yes, and two white stones, found on a muddy river bank, where he and his friends had played like small brown beavers, and, at the bottom of the box, a limp, tooth-marked leather strap, once worn as a collar by his mongrel dog, who had died as he had lived, in absolute and infinite devotion.

After the other angels have presented their grand gifts, the littlest angel shyly steps forward to give his. All eyes are on the box and what's inside. *The angels are shocked! So plain! Surely this will not be God's favorite gift! But when God opens the box, He understand the sacrifice and love behind it. He accepts the humble gift with joy, lifts the box high and at that moment it transforms and becomes the Star of Bethlehem. God says:*

This small box pleases Me most. Its contents are of the Earth and of men, and My Son is born to be King of both. These are the things My Son, too, will know and love and cherish and then, regretful, will leave behind Him.

The lesson the Littlest Angel gives us is that the best gifts come from the heart. No matter how fancy, expensive or impressive a gift is, unless it is given with love it is meaningless.

May your Christmas be filled with the simple gifts of love, peace, hope and joy.

Pam Hoel,
Church Historian

*Charles Tazewell. *The Littlest Angel*. Children's Press, Inc.

The Littlest Angel.
Children's Press, Inc.



A **LOOK** BACK AT NOVEMBER 2025



American flags were placed on Veteran's graves in honor of their service to our country.



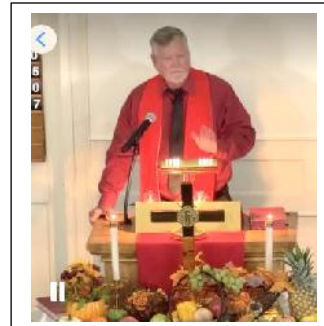
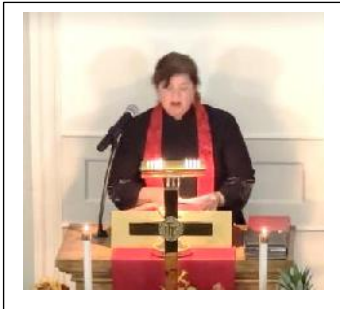
We enjoyed another Mexican Train game night!



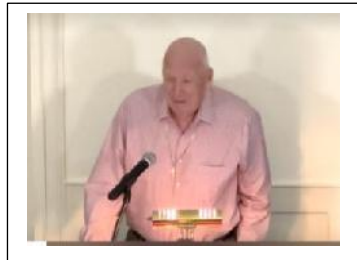
Nov 23rd, we recognized 14 new members! Nettie Peck, Kevin & Sandi Coupland, Don & Charlene King, Bill & Joyce Haskins, Stan O'Rear, Meg Carmody, Bev & Don Witzel, Darrel Cady, Diane & JP Moery.

Nov 25th, we had a three-church combined Thanksgiving Worship Service. (Bluffton UMC, Church of the Palms UMC and St. Luke's UMC. Four pastors took part in the service. Randall Haase, Scarlett Hester, Chris Thompson and Lee van Rensburg. Jim Smith read the Scripture.





Combined Choir from the three churches!



Nonperishable food items were collected for the Family Promise Shelter House.

We enjoyed refreshments in the Fellowship Hall after the service.



We are so appreciative of our Worship Chair, Nancy Sariscak, and her husband, John, for once again going out of their way to make our joint Thanksgiving Service so meaningful and the reception so full of fellowship. We are truly blessed.

Our Thanksgiving Service would not be complete without the beautiful Cornucopia altar arrangement created by our own Pat Simmons. Her time, talent, and heartfelt dedication bless our congregation each year, and we cannot thank her enough.

Friday, Nov. 28th, was the day for decorating the church and grounds for Advent. We are grateful for all who helped set up the luminaries. May these lights, gifted to St. Luke's by Lois & Wally Willig be a blessing to our community as we share God's love.



Andy & Sharon Makarick came to help decorate!
It was so good to see them out and about!!



Many thanks to the Worship Committee (and their husbands)
for decorating the sanctuary!

We had a very successful Flea Market, Crafts and Bake Sale on Saturday, Nov. 29th!
Organized by Cynthia Thompson, Sandy Lowry & friend Susan Miller.



Instead of our 5th Sunday Potluck,
we had brunch at Ma Daisy's Porch.





MEMBERS & CONGREGANTS

Ruth Dolan	Beverly Cook	Judi & Gary Landin	Bill Trainer	Sheryll Ingram	Linda O'Connor
Mim Mazon	Andy & Sharon Makarick	Pam Hoel	Dave Fisher	Lois Finch	
Kevin Prosser	Lynn Cutshall – new address: 4134 Brightway Street, Weirton WV 26062				

FAMILY AND FRIENDS OF CONGREGANTS

Hannah Nystrom, friend of Marie Baldauf
 David Sharp, son of Beverly Cook
 Norman Neus
 Ellen, wife of Richard Rohde
 Bobby Cleland, nephew of Ouida Dell
 Beverly Byrd, friend of Cynthia Thompson
 Daughter of Don McKay
 Sheila Palamina, friend of Althea Serrant
 Persephone, sister of Penelope Power
 Linda, best friend of Judi Landin's daughter, Nikki
 Martha, friend of Margo Cservek
 Dawn, friend of Nancy Sariscak
 Elaine, friend of Michele Elek
 Patrick, son of friend of Amy Dauplaise
 Sharon Mogel, friend of Marie Baldauf
 Ellen, wife of Richard Rohde
 Todd, son of Richard Rohde
 Margo, friend of Constance Ulrich
 Debbie Hamilton, sister-in-law of Diana & Walker
 Hamilton
 June, sister of Janet Jacoby
 Nancy, friend of Janet Jacoby
 Dawn Sharp, daughter of Beverly Cook
 Heather, friend of Sherri Prosser
 Nancy, mother-in-law of Michelle Cramer
 Nicole, daughter of friend of Amy Dauplaise
 Kayla, granddaughter of Leslie Richards
 Lynn, neighbor of Beverly Cook
 Joy Haley, friend of the Wheelers
 Dorothy Riley, friend of Peggy Firtion

Rosalyn Perdue, mother of Allyn Perdue
 John, friend of Judi Landin
 Dale Lawrence, nephew of Jerry Vagnier
 Barbara, sister of Ouida Dell
 Helene, friend and neighbor of Susie Brown
 Stephanie, daughter of Nettie Peck
 Travel mercies for Nikki, daughter of Judi Landin



*Our deepest sympathy to friends and family of
Pastor Chris' Aunt Ginny on her recent passing.*

*Also to Wallace & Barbara Hubbard's family on the
passing of their son, Tony, nephew of John
Hubbard.*

To family of Gail Moyer, friend of Diana Hamilton.

Let us remember with cards, and prayers...

CHURCH MEMBERS IN NURSING HOMES, ASSISTED LIVING OR HOMEBOUND

Ruth Dolan,
 Summer Breeze
 351 Wilmington Island Rd.
 Memory Care, Room 107
 Savannah GA 31410

Elnora Ekholm, 173 May River Rd.
 Bluffton SC 29910

June Hamilton, 4 Concession Oak Dr.
 Bluffton SC 29909

Jerry Wick, 740 Middletrail Court
 Mt. Airy MD 21771



Happy Birthday!

DECEMBER BIRTHDAYS

05 Kirk Gay
06 Don King
07 Bev Witzel
08 Judi Landin
09 Carl Rogers
10 Bill Metcalf
11 Don Witzel
12 Kathy Smith
18 Marnie Beebe
18 Netti Peck
22 Cathy Hamlin
25 Jennifer Bernhard
25 Carol Rossa

JANUARY BIRTHDAYS

01 David Lynde
06 Mariah Fair
07 Dash Pryor
13 Michele Elek
13 Jean Tanner
14 Mary Goldfinch
15 Norm Stark
17 Bob Heck
18 Ottice Adkins
18 Kevin Prosser
21 Joann Sandruck
22 Matthew Melancon
25 Agnes Scarlett
26 Rick Beebe
26 Michelle Cramer
27 Joe McCulloch
30 Alan Bethel
31 Tina Topoleski

Happy Anniversary

DECEMBER ANNIVERSARIES

09 Janet & Dave Jacoby
23 Jeananne & Gary Cranston

NO JANUARY ANNIVERSARIES



Merry Christmas



OR WATCH "ON-LINE" AT

ST. LUKE'S YOUTUBE CHANNEL

<https://www.youtube.com/@st.lukesunitedmethodistchu8920/videos>

Donate through Vanco, go to our web page:

<https://stlukesumc-okatie.org/>, Click on the "Donate" button at the top of the page. This will link you to our Vanco donation tiles. Choose where your donation will be applied.



Please "like" our Facebook page:

<https://www.facebook.com/profile.php?id=100082060615677&mibextid=LQQJ4d>

LET ME TAKE YOUR PHOTO! If you are attending St. Luke's United Methodist Church, we would like to have you in our Photo Directory. We include visitors as well as members! Please see Pat Simmons to arrange a time to have your photo taken. It only takes a minute of your time!



IF YOU WOULD LIKE TO BECOME A MEMBER OF

ST. LUKE'S – you may pick up an "Invitation to Membership" form (located behind the last pew) also on the bulletin board and in the Fellowship Hall. Or email patsimmonsperdue@gmail.com for a copy. Fill it out, bring it back and Pastor Chris will get in touch with you.

If you cannot come to church, we Thank You for "mailing" your donations to:

St. Luke's UMC
PO Box 2779
Bluffton SC 29910

